



**CONSORTIUM**  
DEVELOPMENTS

---

**COMPANY PROFILE**

2021 - 2022

## Message from the Chairman

**W**e strongly believe that only through the full commitment and high level of professional integrity, coupled with the success of our satisfied Clients, we will achieve our long-term goals.

Our knowledge is deeply rooted in the projects we have developed and managed, and therefore our service is based on both, our academic and professional experience as well as on the hands-on development and management practice in various sectors of the real estate industry.

We are expecting the upcoming period with a lot of excitement as the Egyptian real estate market is evidencing increased activity in all major sectors of the industry, which is further energized by the general improvement of economic conditions of the country and increased inflow of foreign investments.

On Behaf of CMD Board

*Mohamed Madkour*

## Board Members



**Mohamed Madkour**  
Chairman



**Ahmed El Wrdany**  
Vice-Chairman



**Wael Zein**  
C.E.O.



**Hesham Ezzat**  
C.O.O.

## CMD Family



**Bahaa El Hussein**  
C.F.O.



**Ahmed Maher Haridy**  
Legal Director



**Mohamed Nasaar**  
Head of Sales



**Amira Emad**  
Head of Operations



**Rami Emad**  
Head of Contracts



**Nesreen Amin**  
Administrative Manager



**Mohamed Gad**  
Sales Manager



**Olly Medhat**  
HR Manager



**Perry Mehwal**  
Office Manager



**Mayada Younes**  
Reception Manager



## CMD Family





CONSORTIUM  
DEVELOPMENTS

*Vision For Your Life*



CONSORTIUM  
DEVELOPMENTS

# About us.



With more than 20 years of successful stories in the real estate sector , CMD is a leader company in the Middle East . A diversified company carrying out engineering, project management, and development activities We are committed to providing professional and courteous service to our valuable clients



CONSORTIUM  
DEVELOPMENTS

# Vision.



We're dedicated to achieving our vision by creating an energetic, positive, results-driven work environment focused on the investment and development of long-term relationships. We measure our success by the results delivered to clients. Our ethics are built on our commitment to offer superior customer service, combining an entrepreneurial flair and bespoke service



CONSORTIUM  
DEVELOPMENTS

# Mission.



Providing quality housing and commercial properties that meet the evolving needs of our customers, and thereby contribute towards the development of our country. Creating strong returns for our shareholders, ensuring a safe, healthy and harmonious environment for communities within our developments, where people can feel “at home”.



CONSORTIUM  
DEVELOPMENTS

*Building Sustainable Communities*

## Group of Companies



**Triform**  
Investment & Development

  
element  
Design Studio

**ICONIC**<sup>®</sup>  
G R O U P

  
MENTOR

  
inscape



Established in 2016, We are a group of real estate professionals with regional experiences. Certified from international real estate institutions to support our clients with the latest market opportunities that Meets their needs with a world class standard of service quality.

Zain has been awarded the sales exclusivity for several commercial and residential reputable and distinguished projects thus leading the way to fulfill a mutually successful finale.



Triform is a broadly experienced company founded in 2012, specialized in food industry in terms of franchising services, and hotels management services. We work with leading developers, operators and national retailers.

**Triform**  
Investment & Development

*Mawlawiyah*

**ZWAIN**  
Contemporary Moroccan Cuisine

قهوجي  
QAHUGI

**millet**  
fresh, healthy & tasty

**XOLA**  
NATIVE AROMATIC COFFEE

**Confetti**

**TRIBES**  
Bakery & Confectionery



Iconic Real Estate facilitates the process of becoming a property advisor for those passionate to join the business . We provide the opportunity for anyone , whether specialized in the real estate industry or not .

The world's population today is on the move, as people and businesses rethink virtually every aspect about where to live and work. These shifts carry profound implications for real estate investors, developers, and managers. Now is the time to apply the full breadth of our expertise to emerging opportunities. Now is the time to unify your company around a strategy that keeps you on top.

In 2018, Iconic has successfully achieved 890 millions egyptian pounds sales and became a market leader in Egypt



Inscape was established In 2018. It has grown to be one of the premier landscape and interiors contracting companies In Egypt.

We have expanded with strong leadership and a core team of 50 professionals, being a value based Organization: We strongly believe that we cannot grow and prosper without adhering to our core values and following our missions to fulfill our dreams.

We specialize in full-service interior design, including custom furniture, lighting and art procurement/installation. Our project resumé includes both new home construction and renovations of residential, commercial interiors of all sizes, small to large.



Established in 2016, with successful retail and commercial projects history, integrating property services and facility management vertically and horizontally enables us to deliver greater cost control, improved risk management and enhanced value for our clients.

Vertically, our teams reach across customer services (helpdesk, QHSE monitoring, service management and assurance), through to helping you to align your strategy to your business and changing supplier industries and markets.

Horizontally, our teams span all aspects of the property lifecycle: lease and landlord management, capital project planning, asset lifecycle, facilities management, energy and sustainability management and workplace optimisation

Founded in 2005, **Element Design Studio** is a full-service Architectural and Interior design firm providing architecture, interiors, and planning services for clients in the public and private sectors.

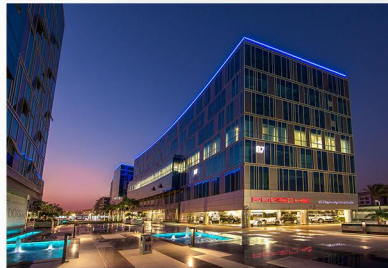
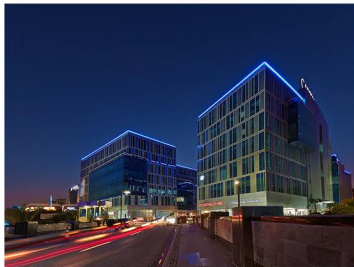
Our diverse expertise targets the residential, commercial, institutional and industrial spaces throughout Egypt and the Middle East. The firm also specializes in corporate interiors, high-end residential, hospitality and retail projects.

We provide our clients with top- notch 3D visualization services to bring life to the projects.

#### **Services Offered**

Urban Planning   Architecture   Interiors   Landscape

Malls & Office Buildings



Capital Business Park, Elsheikh Zayed

Malls & Office Buildings



Atrium Plaza, Elsheikh Zayed

Resorts & Residential Compounds



Address East - New Cairo



Resorts & Residential Compounds



Aroma Resort - El Sokhna



Palma Sharm Resort - Sharm El Sheikh



Diyar Al Rabwa - Sharm El Sheikh



The Ranch - Cairo Alex.Road

Resorts & Residential Compounds



Minerva - New Capital

Resorts & Residential Compounds



Village West - El Sheikh Zayed

Resorts & Residential Compounds



Residence 8 - New Capital





Tulip Residence Hotel - El Sokhna

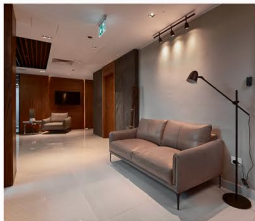


Hospitality & Leisure



Diyar Al Rabwa Hotel - Sharm El Sheikh

Offices Interiors



CS Office - CBP

Offices Interiors



Benaa Misr Building - Smart Village

Offices Interiors



The Academy Headquarters- Elsheikh Zayed

Retail Interiors



Bakier Stationery - MOA



Mawlawiyah Restaurant (Dubai - CBP - MOA)



# YARU

*Residence*

**ONGOING PROJECTS**

## About YARU

CMD Developments has signed one of the largest strategic alliances in the real estate market with Qontrac at target investments exceeding EGP 4 bn, aiming to carry out EGP 2 bn-YARU Compound.

Located in New Capital, R8 on a plot of 35 Feddan with just 20% of built up area and 80% greenery, residents can spend their time freely relaxing exercising or socializing in the clubhouse cycling paths and walking trails that interconnect the clusters of the project with the essence of the preservation of their privacy.

YARU landscape is planned precisely to be the new capital central hub, yet also offering an extraordinary balance.. including glamour everywhere to given an exceptional experience to its people.

## PROJECTS

**YARU**  
*Residence*







QONTRAC  
DEVELOPMENTS



CONSORTIUM  
DEVELOPMENTS

YARU  
*Residence*













QONTRAC  
DEVELOPMENTS



CONSORTIUM  
DEVELOPMENTS

YARU  
*Residences*







QONTRAC  
DEVELOPMENTS



CONSORTIUM  
DEVELOPMENTS

YARU  
*Residences*









QONTRAC  
DEVELOPMENTS

CONSORTIUM  
DEVELOPMENTS

YARU  
*Residences*



YARU



CONSORTIUM  
DEVELOPMENTS

# La mer

R A S E L H E K M A

## About La Mer

“La Mer” is a new prime year-round -186-acre beach resort stretching across 1,100 meters of private pristine beach along the stunning coastline of Ras El Hekma Bay, famous for its immaculate beaches and crystal-clear waters. It boasts one of the longest beaches in the North Coast offering uniquely stylish residential neighborhoods with a fantastic assortment of leisure and entertainment activities set amidst lush landscapes and meandering lagoons, and all featuring panoramic views of the azure waters of the Mediterranean Sea.

La Mer with a stunning sea front view, perched on a series of elevated platforms, encompassing state of the art villas with havens of inspiring comfort and supreme elegance, each caters to individual privacy while all feature an unreplaceable sea view, private swimming pool and lush landscapes with panoramic garden views.

**La Mer - Ras El Hekma**  
*Master Plan*







CONSORTIUM  
DEVELOPMENTS

La mer  
RAS EL HERMA





CONSORTIUM  
DEVELOPMENTS

# La mer Clubhouse





CONSORTIUM  
DEVELOPMENTS







CONSORTIUM  
DEVELOPMENTS







CONSORTIUM  
DEVELOPMENTS





CONSORTIUM  
DEVELOPMENTS





CONSORTIUM  
DEVELOPMENTS





CONSORTIUM  
DEVELOPMENTS







CONSORTIUM  
DEVELOPMENTS





CONSORTIUM  
DEVELOPMENTS

## *Upcoming Projects*



طريق ممهد  
الاسكندرية الصحراو



# CONSORTIUM

DEVELOPMENTS



15532



103 El-Thawrah street, Heliopolis,  
Cairo, EGYPT



Al Guezira Plaza, Tower 1, Unit 303-304,  
El Sheikh Zayed



@CMDdevelopments1



@cmddevelopment